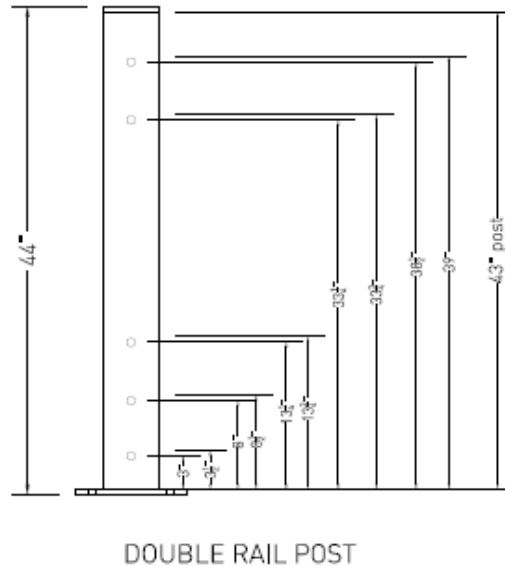
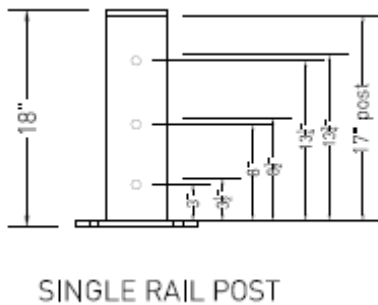




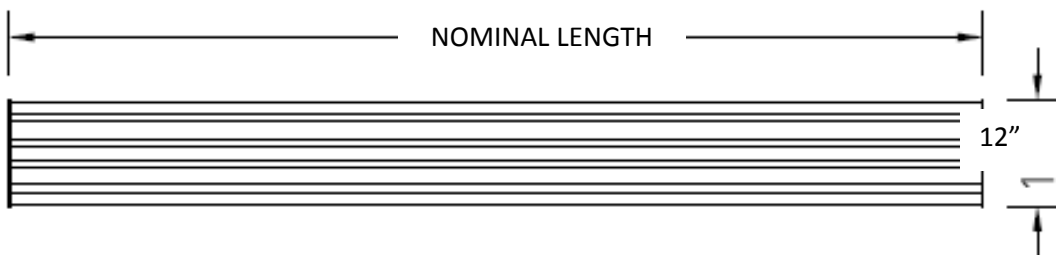
# Guardsmith®

## Architectural Engineering Product Specifications

1. Guardsmith® guardrail components shall be designed in accordance with NBC, AISC and CSA standards listed in §13145.3.
2. Guardsmith® post baseplates shall be made of (10" x 10" x 1/2") material welded to HSS (5" x 5") tubular ASTM 500 Grade C metal. Height of posts shall be 44" for double high rail and 18" for single high rail. Posts shall be pre-punched to accommodate 1/2" diameter fasteners. Posts shall be designed to accommodate various rail heights.



3. Guardsmith® shall have 12" high rails with welded side brackets that are manufactured with ASTM A607 Grade 50 corrugated steel. Installed rail shall be 42" high for double post and 17" high for single post. Rail lengths shall be 2 feet to 10 feet nominal.



4. All components for Guardsmith® series guardrail shall be powder coated one coat of highly visible safety yellow paint and are intended for indoor use only.



# Guardsmith®

## Powder Coated Paint Technical Datasheet

# HS222Y183

## Technical Data

System	Color	Appearance	Gloss
Hybrid	Fast Cure Safety Yellow	Smooth finish, good flow	82 ± 4 units on 60° gloss meter
Properties			
<b>Specific Gravity</b>		<b>Coverage</b>	
Approximately 1.49		129 sq. ft./lb/1 mil	
<b>Hardness</b>		<b>Impact</b>	
2H (ASTM D3363)		100 in-lb. direct; 100 in-lb. reverse (ASTM D2794)	
<b>Salt Spray</b>		<b>Humidity</b>	
1,000 hrs -- less than 1/16" creepage over phosphate treated test panels (ASTM B 117)		1,000 hrs. -- no blistering over phosphate treated test panels (ASTM D 2247)	
<b>Curing Instructions</b>		<b>Conical Mandrel</b>	
4 minutes at 400°F (204°C) or 8 minutes at 350°F (177°C) (metal temperature)		3/16" (ASTM D522)	
<b>Features</b>	<ul style="list-style-type: none"> <li>• Good adhesion</li> <li>• Good chemical resistance</li> <li>• Good physical &amp; mechanical properties</li> <li>• Good spraying properties</li> <li>• Indoor use</li> <li>• Recommended film thickness 2 to 4 mils</li> </ul>		
<b>Maximum Recommended Storage Temperature</b>		80°F (27°C)	
<b>Date</b>		October 10, 2006	

5. Guardsmith® guardrail system shall incorporate a pass through post fastener design. The (½" x 7") carriage bolt shall pass completely through the post and rail bracket. Bolt shall be secured with washer and nut. Nut shall be tightened 1/3 turn past snug tight condition. Post plates shall be affixed to concrete floor by 4-1/2" x 5/8" wedge anchors in at least 6" of good concrete.
6. The guardrail shall be installed at least 12" away from the surface to be protected. This minimal distance is necessary for deflection of an impacted rail.
7. Total system shall be designed to meet or exceed a rating of 10,000 lb. at 4 mph breakthrough when installed in proper concrete depth. Lift out brackets are not rated.