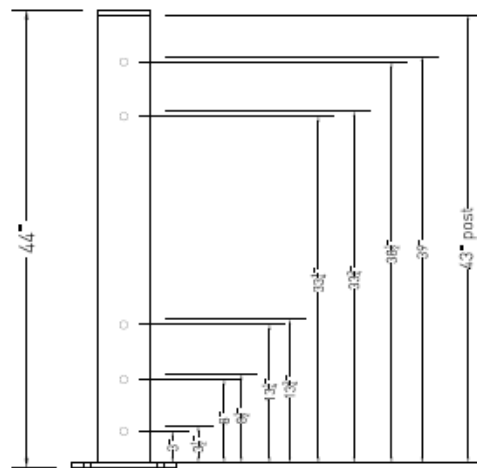




# Exteriorguard®

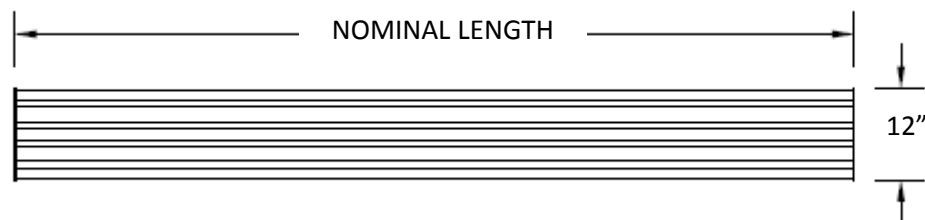
## Architectural Engineering Product Specifications

1. Exteriorguard® guardrail components shall be designed in accordance with NBC, AISC and CSA standards listed in §13145.3.
2. Exteriorguard® post baseplates shall be made of (10" x 10" x ½") material welded to HSS (5" x 5") tubular ASTM 500 Grade C metal. Height of posts shall be 44" for double high rail. Posts are pre-punched to accommodate ½" diameter fasteners. Posts shall be designed to accommodate various rail heights.



DOUBLE RAIL POST

3. Exteriorguard® shall have 12" high rails with welded side brackets that are manufactured with ASTM A607 Grade 50 corrugated steel. Installed rail shall be 42" high for double post. Rail lengths shall be 2 feet to 8 feet nominal.



4. All components for Exteriorguard® series guardrail shall be powder coated one coat of highly visible safety yellow paint and are intended for outdoor use.



**Exteriorguard®**

Powder Coated Paint Technical Datasheet

## ZS311Y28

### Technical Data

Date : 06/11/2009

System	Color	Appearance	Gloss
Super durable	TRAFFIC YELLOW	Smooth	70 ± 4 units on 60°
Properties			
Specific Gravity	Approximately 1.66		
Coverage	116 sq. ft./lb/1 mil		
Hardness	2H - (ASTM D3363)		
Film thickness	Recommended film thickness 2.5 to 4 mils		
Salt Spray	1000 hrs less than 1/16" in creepage over B-1000 treated test panels (ASTM B117)		
Humidity	1000 hrs no blistering over B-1000 treated test panels (ASTM D2247)		
Flexibility	3/16" (ASTM D522)(Conical Mandrel)		
Impact	100 in-lb direct; 100 in-lb reverse (ASTM D2794)		
Cross Hatch Adhesion	5B (ASTM D3359)		
Curing Instructions	7 minutes at 400°F (204°C) or 10 minutes at 375°F (191°C) or 15 minutes at 350°F (177°C) (metal temperature)		
Features			
<ul style="list-style-type: none"><li>- Contributes to LEED credits</li><li>- Enhanced mar resistance</li><li>- Excellent outdoor durability (Meets or exceeds A.A.M.A. 2604)</li></ul>			
Maximum Recommended Storage Temperature			80°F (27°C)

5. Exteriorguard® guardrail system shall incorporate a pass through post fastener design.  
The ( $\frac{1}{2}$ " x 7") galvanized carriage bolt shall pass completely through the post and rail bracket.  
Bolt shall be secured with washer and nut. Nut shall be tightened  $\frac{1}{3}$  turn past snug tight condition.  
Post plates shall be affixed to concrete floor by 4- $\frac{1}{2}$ " x  $\frac{5}{8}$ " galvanized wedge anchors in at least 6" of good concrete.
6. The guardrail shall be installed at least 12" away from the surface to be protected. This minimal distance is necessary for deflection of an impacted rail.
7. Total system shall be designed to meet or exceed a rating of 10,000 lb. at 4 mph breakthrough when installed in proper concrete depth.